

## GBP SERIES Air Driven Gas Booster

Single Acting Single 160 mm Air Head

### Technical Data Sheet

### Gas booster GBP16



GBP16

single acting, single air drive head, single stage

- Aluminium alloy wetted materials of construction
- Specialised construction materials available
- PTFE pressure seals as standard
- Built-in cooling of gas barrels
- Separation between gas and pneumatic seals
- Airline lubrication required
- 120mm stroke reduces cycle rate and increases life
- Suitable for most hazardous areas
- Available as a complete packaged system PROPAC

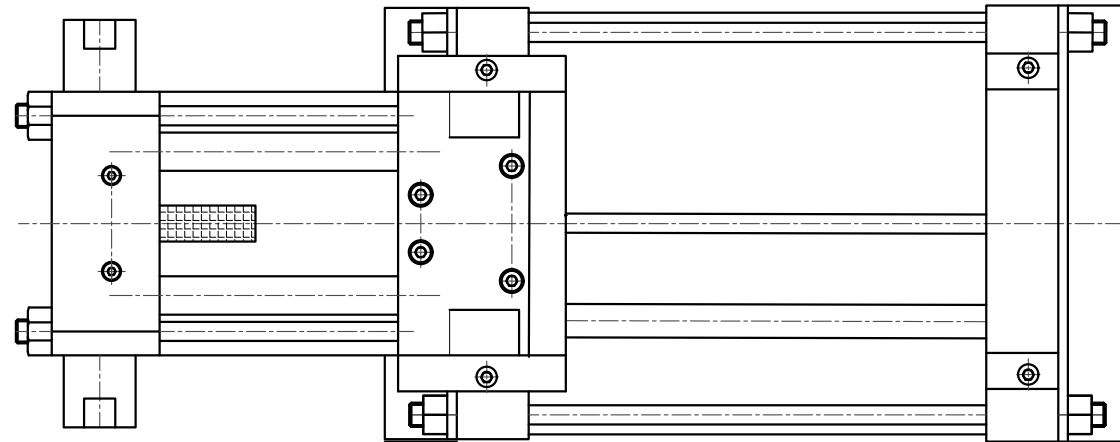
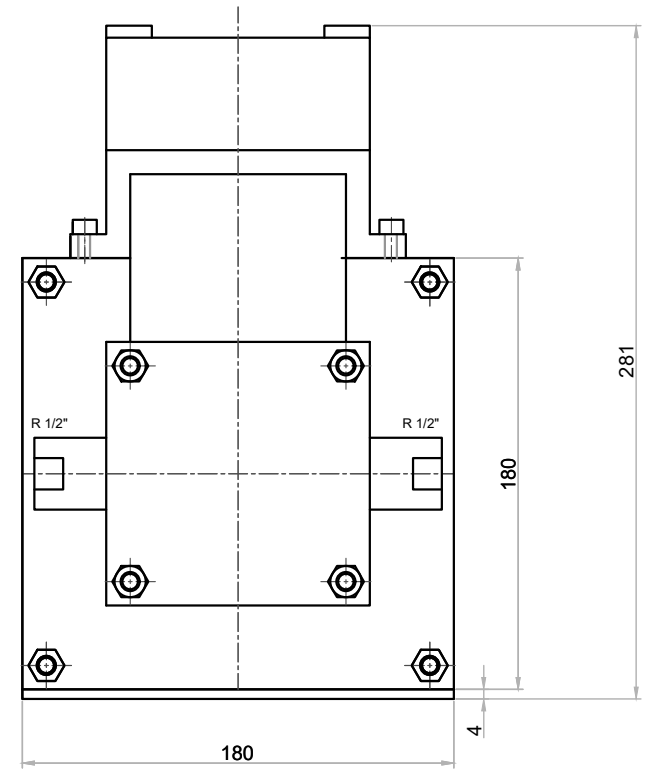
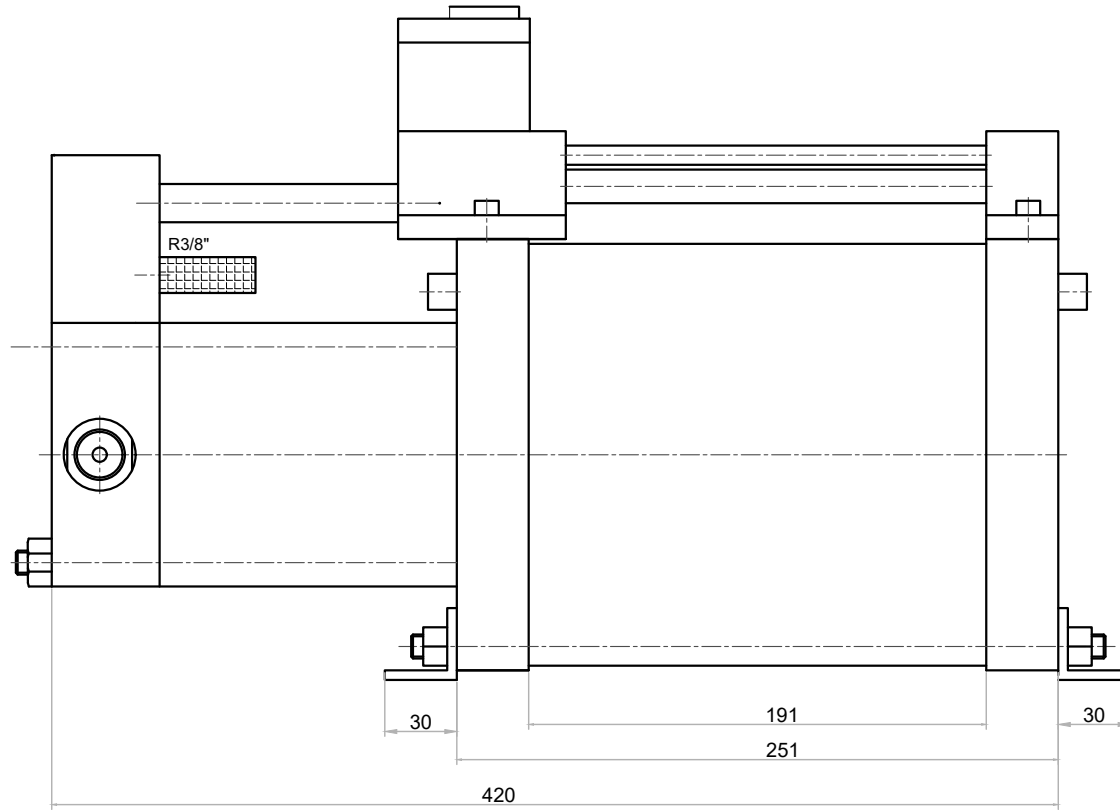
### Technical Data:

Air drive pressure:	2 - 8 bar
Pressure ratio:	1:16
Minimum suction pressure:	7 bar
Maximum suction pressure:	128 bar
Minimum outlet pressure:	32 bar
Maximum outlet pressure:	128 bar
Displacement volume / double stroke:	150 cm <sup>3</sup>
Maximum cycles:	100/min
Stall pressure:	Pressure ratio x Air drive pressure

Air drive:	3/8 BSP
Connection:	Inlet / Outlet: 3/8 BSP
Maximum operating temperature:	100° C
Net weight:	14 kg

### Approximate Dimensions:

Length:	420 mm
Width:	180 mm
Height:	281 mm



## HİDROKRAFT

### Dimension drawing

### Type : GBP16

Air drive inlet = G3/8 (3/4 BSP)

Gas inlet = G1/2 (1/2 BSP)

Gas outlet = G1/2 (1/2 BSP)

**GBP16**

**hidrokraft**